



VAN CARE



INTERNAL VAN RACKING - FAHRZEUGEINRICHTUNGEN - AMENAGEMENT INTERIEUR DE VEHICLES

XLD-line 2019



Proudly **Van Care** presents the full range of the XLD-line.

Our line of eXtra Large Drawers will offer you a full flexible range to answer any demands of the end-clients, which cannot be solved with our standard M-line.

The XLD-line can be used as an *under floor* solution, single drawers or any combination of multiple drawers together.

But also, *on* the floor the XLD line can offer many solutions on builds which normally are not possible.

This leaflet is made to help you understand the flexibility of the XLD-line and to give you an overview of the range.

Content

XLD-line

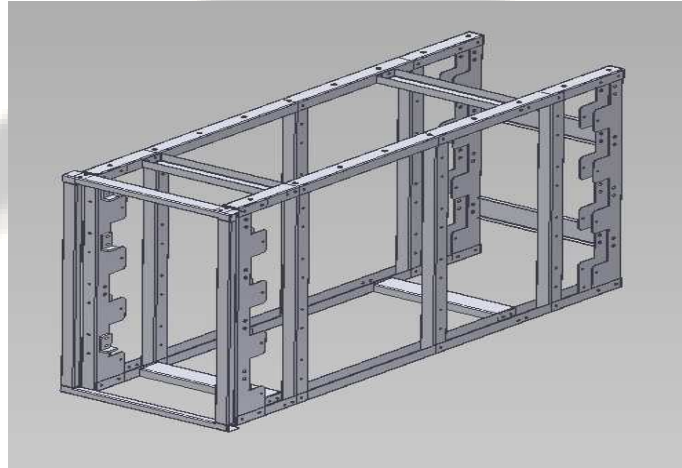
Product specifications	2
Flexibility, low stock, and no bulky transport.....	5
Full range.....	6
Full mounted products.	8
Optional Top Edge.....	10
Dividers.....	11
Covers.....	11
Exploded in separate parts.....	13

XLD-line, product specifications

The XLD consists of a housing-frame of 1.5mm and 2mm U-shape steel profiles, which are powder coated.

These U-shape profiles are universal and can be used in various XLD's.

The powder coated U-shape profiles are rivetted together with high tech rivets to ensure a rigid stable construction.



Every drawer runs on high quality galvanized ball bearing slides, which can take up to 80 kg's per set. They can open 100%. The slides are also rivetted to the housing-frame and to the drawer. The XLD-line has 4 lengths of slides, resulting in 4 lengths of XLD's. L1=776mm, L2=1026mm, L3=1266mm and L4=1526mm.

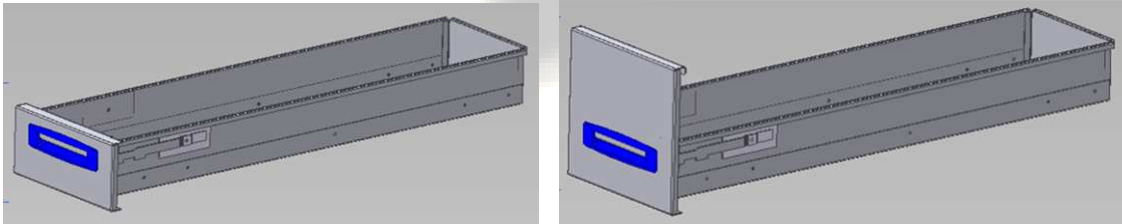
For safety **Van Care** designed a "pre-stop" so accidentally clamping fingers is prevented.



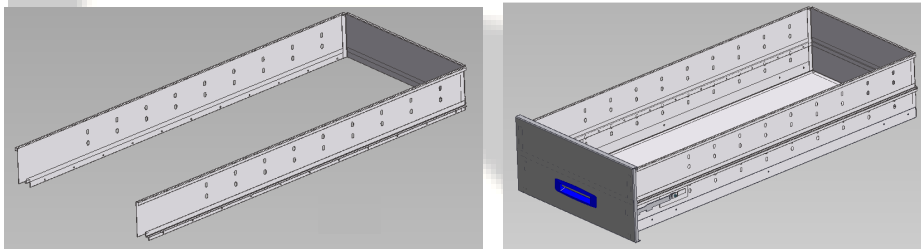
The drawer is made from 1.5mm steel front and the box of 1mm sheet aluminium (Al), reinforced, so we keep the overall weight as low as possible. Front and box will be powder coated.

Standard we deliver the XLD-drawers with a low Al box and 3 standard low dividers.

As an option we offer an Al Top Edge which can be rivetted on the Al Box to increase the height of the box. As option with this Top Edge we offer a higher divider if you use the Top Edge.



Below example of a Top Edge.



We offer a full steel box option if the weight is no issue, and the end-client needs an XLD which can take up to 150 kg of load by means of a double slide set. This can be asked as a special request.

Around the fronts of the XLD drawers when mounted in the housing-frame, we offer various front-frames.



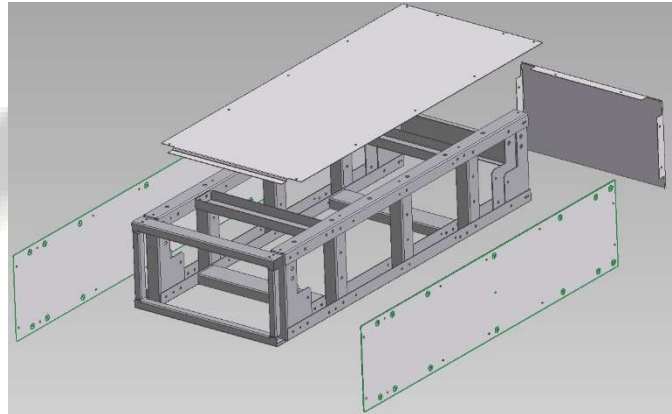
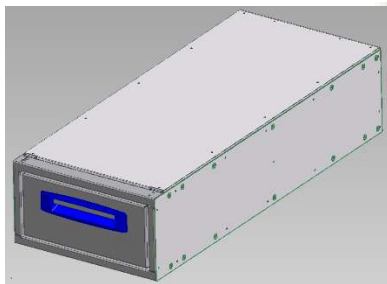
As mentioned before, the XLD is a product which can be used above the floor as well. So, it will be visible and then the open housing frame must be covered.

In this case it is necessary to have the possibility to close of any open sides of the XLD which is seen.

It can be the top and a side. Or only the back and both sides.

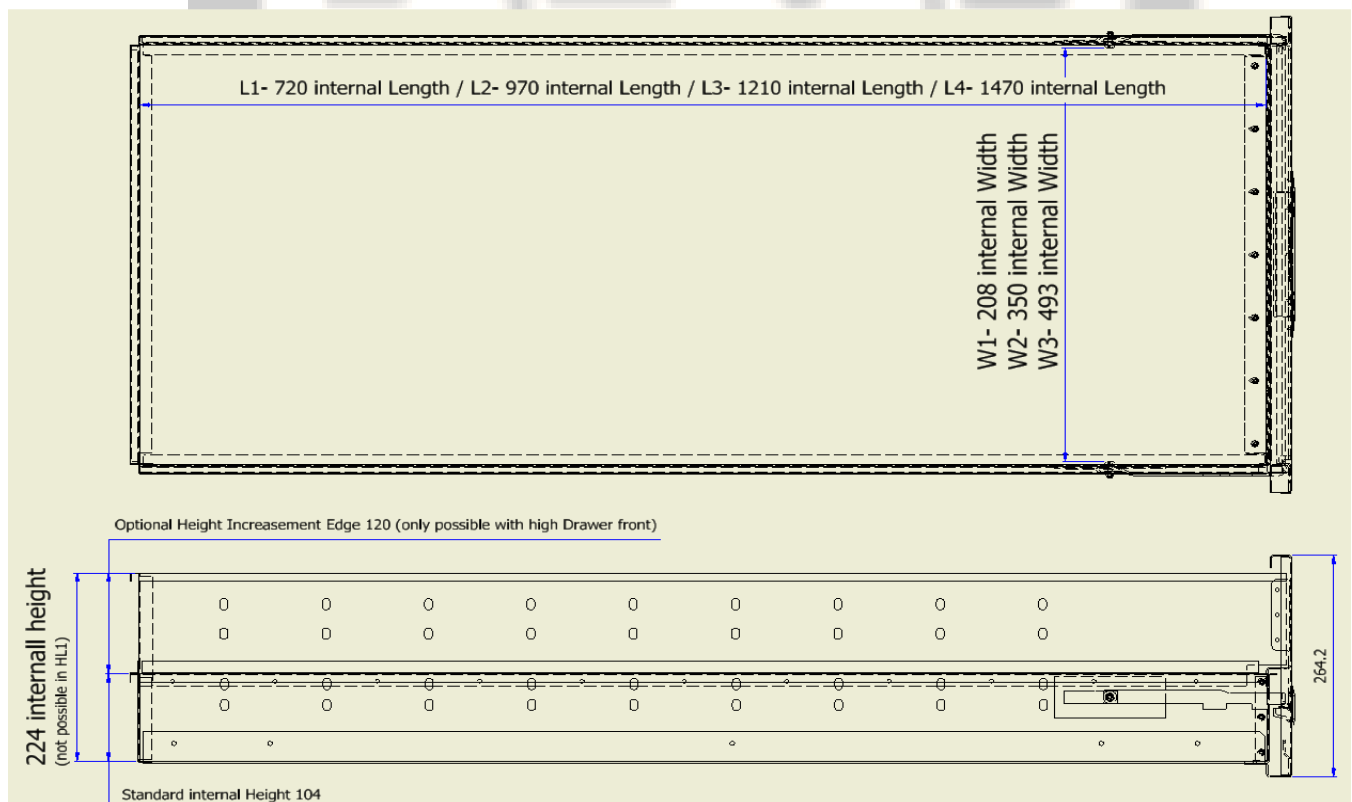
We offer for all XLD's:

- Side Cover
- Top Cover
- Back Cover



These will be made out of 1mm Al Powder coated. Holes to rivet them against the XLD housing-frames will be prefabricated, and the required rivets will be with each plate.

Below all internal drawer-box dimensions:



Flexibility, low stock, and no bulky transport.

Because the XLD-line is made of uniform U-shape profiles which can be used for various XLD's we ask you to read this paragraph with an open mind and maybe you see what we vision for the XLD warehousing and transport in the same way.

Maybe you decide to adapt this for your firm in the future.

We offer a wide range XLD's which is maybe too broad for your needs.

So, you select a certain XLD range out of the full range.

Of these chosen XLD's you will probably order a certain quantity to have them on stock for fast delivery to your end-clients.

But also possible is that for the chosen range you buy only the separate U-profiles and a number of separate drawers, and in this way, you can build at random out of your chosen range.

The advantage is that you are flexible in what type XLD you sell, because you can make more out of a smaller stock. In your warehouse you have less fixed products, less space taken because these are separate U-profiles and only some bulky drawers.

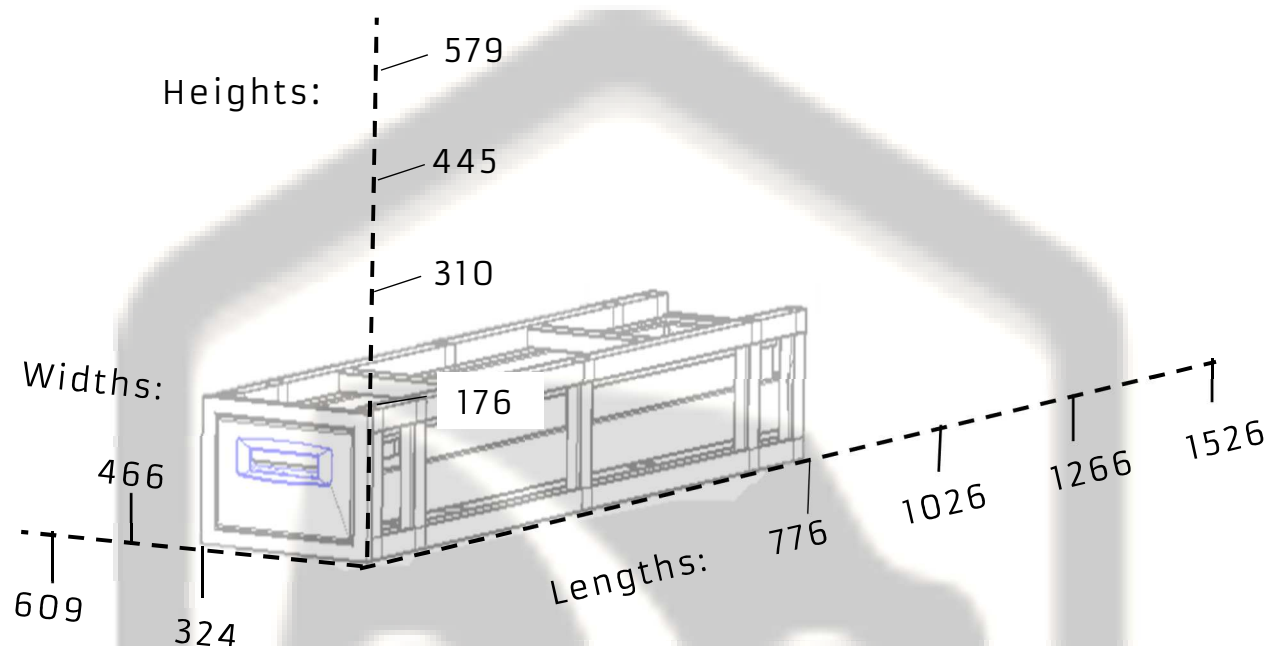
This instead of many complete XLD's in your warehouse. Another benefit is that the transport of separate profiles is more cost efficient.

To build the XLD's all you need is a good strong air-rivet gun, and standard tools (specs of rivet gun can be provided by us).

We can imagine that at first you want to do up experience with complete XLD's. Before you decide to build the XLD's yourself.

XLD-full range

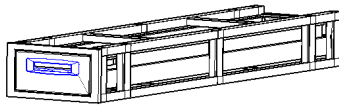
At this moment we have a staggering 96 different XLD's
The possibilities are explained by these clear graphics and table below.



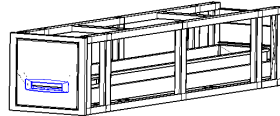
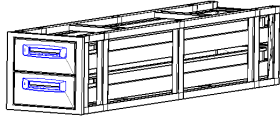
Overviewing table of the measurements

Lengths (mm)		Widths (mm)		Heights (mm)	
L1	776	W1	324	HL1	176
L2	1026	W2	466	H1	310
L3	1266	W3	609	HL2	445
L4	1526			H2	579

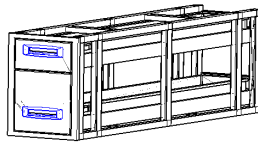
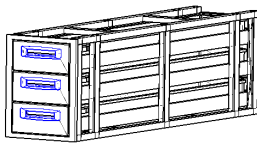
And then there are the possibilities for multiple drawers per XLD heights!



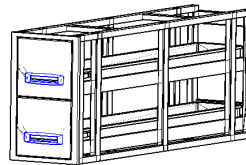
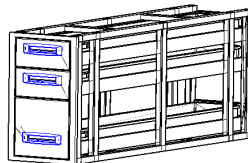
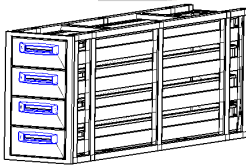
HL1=176 can have only 1 low drawer
(in 4 lengths and 3 widths.)



H1=310 can have or 1 high or
2 low Drawers
(in 4 lengths and 3 widths.)



HL2=445 can have or 3 low or 1 high
and 1 low drawer
(in 4 lengths and 3 widths.)



H2=579 can have
or 4 low or 1 high and 2 low
or 2 high drawers
(in 4 lengths and 3 widths.)

This all results in a total of 96 XLD drawers!

And gives the following product code: "**XLD-LxWyHz-D**"
(D=quantities of drawers)

On the next pages we will give you first the full mounted XLD product codes with a short description and its prices.

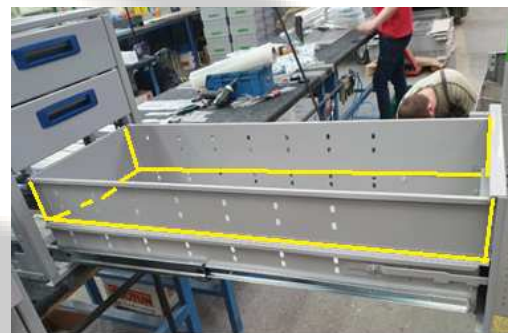
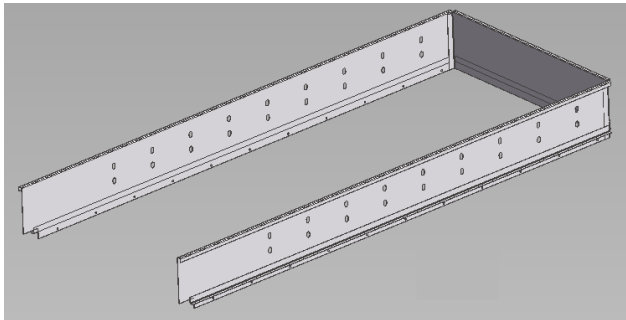
Followed by a listing of all separate profiles, drawers and other parts.

XLD-line, full mounted products.

			L	W	H
XLD-L1W1HL1-1	16-0-088-00	XL Frame with one Drawer	776	324	176
XLD-L1W1H1-1	16-0-010-00	XL Frame with one Drawer	776	324	310
XLD-L1W1H1-2	16-0-011-00	XL Frame with two Drawers	776	324	310
XLD-L1W1HL2-2	16-0-091-00	XL Frame with two Drawers	776	324	445
XLD-L1W1HL2-3	16-0-092-00	XL Frame with three Drawers	776	324	445
XLD-L1W1H2-2	16-0-012-00	XL Frame with two Drawers	776	324	579
XLD-L1W1H2-3	16-0-013-00	XL Frame with three Drawers	776	324	579
XLD-L1W1H2-4	16-0-014-00	XL Frame with four Drawers	776	324	579
XLD-L1W2HL1-1	16-0-089-00	XL Frame with one Drawer	776	466	176
XLD-L1W2H1-1	16-0-024-00	XL Frame with one Drawer	776	466	310
XLD-L1W2H1-2	16-0-025-00	XL Frame with two Drawers	776	466	310
XLD-L1W2HL2-2	16-0-093-00	XL Frame with two Drawers	776	466	445
XLD-L1W2HL2-3	16-0-094-00	XL Frame with three Drawers	776	466	445
XLD-L1W2H2-2	16-0-026-00	XL Frame with two Drawers	776	466	579
XLD-L1W2H2-3	16-0-027-00	XL Frame with three Drawers	776	466	579
XLD-L1W2H2-4	16-0-028-00	XL Frame with four Drawers	776	466	579
XLD-L1W3HL1-1	16-0-090-00	XL Frame with one Drawer	776	609	176
XLD-L1W3H1-1	16-0-038-00	XL Frame with one Drawer	776	609	310
XLD-L1W3H1-2	16-0-039-00	XL Frame with two Drawers	776	609	310
XLD-L1W3HL2-2	16-0-095-00	XL Frame with two Drawers	776	609	445
XLD-L1W3HL2-3	16-0-096-00	XL Frame with three Drawers	776	609	445
XLD-L1W3H2-2	16-0-040-00	XL Frame with two Drawers	776	609	579
XLD-L1W3H2-3	16-0-041-00	XL Frame with three Drawers	776	609	579
XLD-L1W3H2-4	16-0-042-00	XL Frame with four Drawers	776	609	579
			L	W	H
XLD-L2W1HL1-1	16-0-079-00	XL Frame with one Drawer	1026	324	176
XLD-L2W1H1-1	16-0-005-00	XL Frame with one Drawer	1026	324	310
XLD-L2W1H1-2	16-0-006-00	XL Frame with two Drawers	1026	324	310
XLD-L2W1HL2-2	16-0-082-00	XL Frame with two Drawers	1026	324	445
XLD-L2W1HL2-3	16-0-083-00	XL Frame with three Drawers	1026	324	445
XLD-L2W1H2-2	16-0-007-00	XL Frame with two Drawers	1026	324	579
XLD-L2W1H2-3	16-0-008-00	XL Frame with three Drawers	1026	324	579
XLD-L2W1H2-4	16-0-009-00	XL Frame with four Drawers	1026	324	579
XLD-L2W2HL1-1	16-0-080-00	XL Frame with one Drawer	1026	466	176
XLD-L2W2H1-1	16-0-019-00	XL Frame with one Drawer	1026	466	310
XLD-L2W2H1-2	16-0-020-00	XL Frame with two Drawers	1026	466	310
XLD-L2W2HL2-2	16-0-084-00	XL Frame with two Drawers	1026	466	445
XLD-L2W2HL2-3	16-0-085-00	XL Frame with three Drawers	1026	466	445
XLD-L2W2H2-2	16-0-021-00	XL Frame with two Drawers	1026	466	579
XLD-L2W2H2-3	16-0-022-00	XL Frame with three Drawers	1026	466	579
XLD-L2W2H2-4	16-0-023-00	XL Frame with four Drawers	1026	466	579
XLD-L2W3HL1-1	16-0-081-00	XL Frame with one Drawer	1026	609	176
XLD-L2W3H1-1	16-0-033-00	XL Frame with one Drawer	1026	609	310
XLD-L2W3H1-2	16-0-034-00	XL Frame with two Drawers	1026	609	310
XLD-L2W3HL2-2	16-0-086-00	XL Frame with two Drawers	1026	609	445
XLD-L2W3HL2-3	16-0-087-00	XL Frame with three Drawers	1026	609	445
XLD-L2W3H2-2	16-0-035-00	XL Frame with two Drawers	1026	609	579
XLD-L2W3H2-3	16-0-036-00	XL Frame with three Drawers	1026	609	579
XLD-L2W3H2-4	16-0-037-00	XL Frame with four Drawers	1026	609	579

			L	W	H
XLD-L3W1HL1-1	16-0-070-00	XL Frame with one Drawer	1266	324	176
XLD-L3W1H1-1	16-0-003-00	XL Frame with one Drawer	1266	324	310
XLD-L3W1H1-2	16-0-004-00	XL Frame with two Drawers	1266	324	310
XLD-L3W1HL2-2	16-0-073-00	XL Frame with two Drawers	1266	324	445
XLD-L3W1HL2-3	16-0-074-00	XL Frame with three Drawers	1266	324	445
XLD-L3W1H2-2	16-0-051-00	XL Frame with two Drawers	1266	324	579
XLD-L3W1H2-3	16-0-052-00	XL Frame with three Drawers	1266	324	579
XLD-L3W1H2-4	16-0-053-00	XL Frame with four Drawers	1266	324	579
XLD-L3W2HL1-1	16-0-071-00	XL Frame with one Drawer	1266	466	176
XLD-L3W2H1-1	16-0-017-00	XL Frame with one Drawer	1266	466	310
XLD-L3W2H1-2	16-0-018-00	XL Frame with two Drawers	1266	466	310
XLD-L3W2HL2-2	16-0-075-00	XL Frame with two Drawers	1266	466	445
XLD-L3W2HL2-3	16-0-076-00	XL Frame with three Drawers	1266	466	445
XLD-L3W2H2-2	16-0-054-00	XL Frame with two Drawers	1266	466	579
XLD-L3W2H2-3	16-0-055-00	XL Frame with three Drawers	1266	466	579
XLD-L3W2H2-4	16-0-056-00	XL Frame with four Drawers	1266	466	579
XLD-L3W3HL1-1	16-0-072-00	XL Frame with one Drawer	1266	609	176
XLD-L3W3H1-1	16-0-031-00	XL Frame with one Drawer	1266	609	310
XLD-L3W3H1-2	16-0-032-00	XL Frame with two Drawers	1266	609	310
XLD-L3W3HL2-2	16-0-077-00	XL Frame with two Drawers	1266	609	445
XLD-L3W3HL2-3	16-0-078-00	XL Frame with three Drawers	1266	609	445
XLD-L3W3H2-2	16-0-057-00	XL Frame with two Drawers	1266	609	579
XLD-L3W3H2-3	16-0-058-00	XL Frame with three Drawers	1266	609	579
XLD-L3W3H2-4	16-0-059-00	XL Frame with four Drawers	1266	609	579
			L	W	H
XLD-L4W1HL1-1	16-0-061-00	XL Frame with one Drawer	1526	324	176
XLD-L4W1H1-1	16-0-001-00	XL Frame with one Drawer	1526	324	310
XLD-L4W1H1-2	16-0-002-00	XL Frame with two Drawers	1526	324	310
XLD-L4W1HL2-2	16-0-064-00	XL Frame with two Drawers	1526	324	445
XLD-L4W1HL2-3	16-0-065-00	XL Frame with three Drawers	1526	324	445
XLD-L4W1H2-2	16-0-060-00	XL Frame with two Drawers	1526	324	579
XLD-L4W1H2-3	16-0-043-00	XL Frame with three Drawers	1526	324	579
XLD-L4W1H2-4	16-0-044-00	XL Frame with four Drawers	1526	324	579
XLD-L4W2HL1-1	16-0-062-00	XL Frame with one Drawer	1526	466	176
XLD-L4W2H1-1	16-0-015-00	XL Frame with one Drawer	1526	466	310
XLD-L4W2H1-2	16-0-016-00	XL Frame with two Drawers	1526	466	310
XLD-L4W2HL2-2	16-0-066-00	XL Frame with two Drawers	1526	466	445
XLD-L4W2HL2-3	16-0-067-00	XL Frame with three Drawers	1526	466	445
XLD-L4W2H2-2	16-0-045-00	XL Frame with two Drawers	1526	466	579
XLD-L4W2H2-3	16-0-046-00	XL Frame with three Drawers	1526	466	579
XLD-L4W2H2-4	16-0-047-00	XL Frame with four Drawers	1526	466	579
XLD-L4W3HL1-1	16-0-063-00	XL Frame with one Drawer	1526	609	176
XLD-L4W3H1-1	16-0-029-00	XL Frame with one Drawer	1526	609	310
XLD-L4W3H1-2	16-0-030-00	XL Frame with two Drawers	1526	609	310
XLD-L4W3HL2-2	16-0-068-00	XL Frame with two Drawers	1526	609	445
XLD-L4W3HL2-3	16-0-069-00	XL Frame with three Drawers	1526	609	445
XLD-L4W3H2-2	16-0-048-00	XL Frame with two Drawers	1526	609	579
XLD-L4W3H2-3	16-0-049-00	XL Frame with three Drawers	1526	609	579
XLD-L4W3H2-4	16-0-050-00	XL Frame with four Drawers	1526	609	579

XLD-line, optional Top Edge.



Top Edge XLD -- TELxWx

			L	W	H
TEL1W1	16-0-313-00	Top Edge set with rivets	776	324	120
TEL1W2	16-0-314-00	Top Edge set with rivets	776	466	120
TEL1W3	16-0-315-00	Top Edge set with rivets	776	609	120
TEL2W1	16-0-316-00	Top Edge set with rivets	1026	324	120
TEL2W2	16-0-317-00	Top Edge set with rivets	1026	466	120
TEL2W3	16-0-318-00	Top Edge set with rivets	1026	609	120
TEL3W1	16-0-319-00	Top Edge set with rivets	1266	324	120
TEL3W2	16-0-320-00	Top Edge set with rivets	1266	466	120
TEL3W3	16-0-321-00	Top Edge set with rivets	1266	609	120
TEL4W1	16-0-322-00	Top Edge set with rivets	1526	324	120
TEL4W2	16-0-323-00	Top Edge set with rivets	1526	466	120
TEL4W3	16-0-324-00	Top Edge set with rivets	1526	609	120

XLD-line, dividers.

XLD divider for standard low drawers

			W	H
DW1	16-0-325-00	Divider low width 1	324	100
DW2	16-0-326-00	Divider low width 2	466	100
DW3	16-0-327-00	Divider low width 3	609	100

XLD dividers for drawers equipped with the Top Edge option

			W	H
DHW1	16-0-328-00	Divider high width 1	324	210
DHW2	16-0-329-00	Divider high width 2	466	210
DHW3	16-0-330-00	Divider high width 3	609	210

XLD-line, Covers.

XLD Side Cover, per piece, can be used left and right.

			L	H
XLD-L1HL1-SC	16-0-331-00	XLD Side Cover with rivets	776	176
XLD-L1H1-SC	16-0-332-00	XLD Side Cover with rivets	776	310
XLD-L1HL2-SC	16-0-333-00	XLD Side Cover with rivets	776	445
XLD-L1H2-SC	16-0-334-00	XLD Side Cover with rivets	776	579
XLD-L2HL1-SC	16-0-335-00	XLD Side Cover with rivets	1026	176
XLD-L2H1-SC	16-0-336-00	XLD Side Cover with rivets	1026	310
XLD-L2HL2-SC	16-0-337-00	XLD Side Cover with rivets	1026	445
XLD-L2H2-SC	16-0-338-00	XLD Side Cover with rivets	1026	579
XLD-L3HL1-SC	16-0-339-00	XLD Side Cover with rivets	1266	176
XLD-L3H1-SC	16-0-340-00	XLD Side Cover with rivets	1266	310
XLD-L3HL2-SC	16-0-341-00	XLD Side Cover with rivets	1266	445
XLD-L3H2-SC	16-0-342-00	XLD Side Cover with rivets	1266	579
XLD-L4HL1-SC	16-0-343-00	XLD Side Cover with rivets	1526	176
XLD-L4H1-SC	16-0-344-00	XLD Side Cover with rivets	1526	310
XLD-L4HL2-SC	16-0-345-00	XLD Side Cover with rivets	1526	445
XLD-L4H2-SC	16-0-346-00	XLD Side Cover with rivets	1526	579

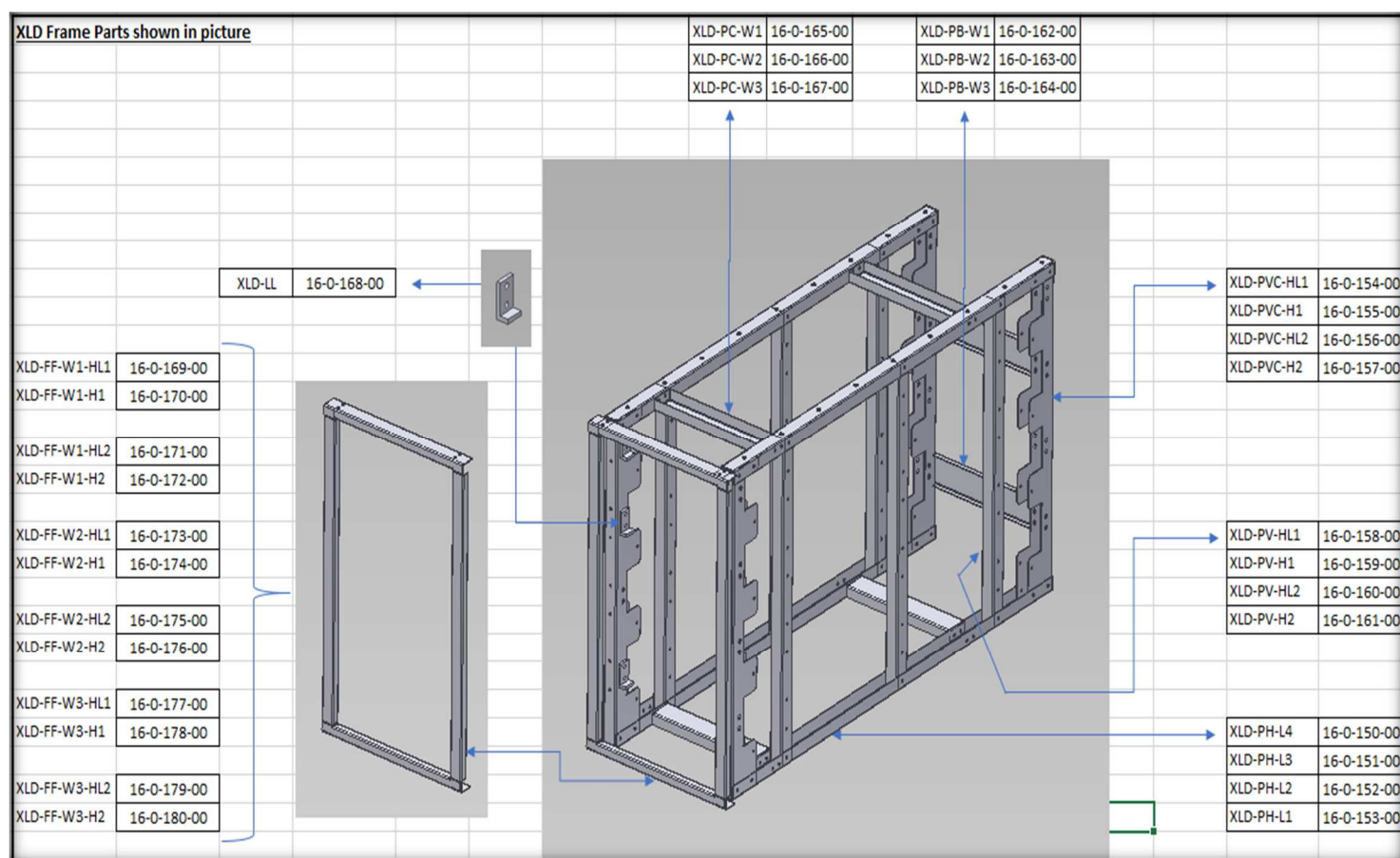
XLD Top Cover, per piece.

			L	W
XLD-L1W1-TC	16-0-347-00	XLD Top Cover with rivets	776	324
XLD-L1W2-TC	16-0-348-00	XLD Top Cover with rivets	776	466
XLD-L1W3-TC	16-0-349-00	XLD Top Cover with rivets	776	609
XLD-L2W1-TC	16-0-350-00	XLD Top Cover with rivets	1026	324
XLD-L2W2-TC	16-0-351-00	XLD Top Cover with rivets	1026	466
XLD-L2W3-TC	16-0-352-00	XLD Top Cover with rivets	1026	609
XLD-L3W1-TC	16-0-353-00	XLD Top Cover with rivets	1266	324
XLD-L3W2-TC	16-0-354-00	XLD Top Cover with rivets	1266	466
XLD-L3W3-TC	16-0-355-00	XLD Top Cover with rivets	1266	609
XLD-L4W1-TC	16-0-356-00	XLD Top Cover with rivets	1526	324
XLD-L4W2-TC	16-0-357-00	XLD Top Cover with rivets	1526	466
XLD-L4W3-TC	16-0-358-00	XLD Top Cover with rivets	1526	609

XLD Back Cover, per piece.

			W	H
XLD-W1HL1-BC	16-0-359-00	XLD Back Cover with rivets	324	176
XLD-W1H1-BC	16-0-360-00	XLD Back Cover with rivets	324	310
XLD-W1HL2-BC	16-0-361-00	XLD Back Cover with rivets	324	445
XLD-W1H2-BC	16-0-362-00	XLD Back Cover with rivets	324	579
XLD-W2HL1-BC	16-0-363-00	XLD Back Cover with rivets	466	176
XLD-W2H1-BC	16-0-364-00	XLD Back Cover with rivets	466	310
XLD-W2HL2-BC	16-0-365-00	XLD Back Cover with rivets	466	445
XLD-W2H2-BC	16-0-366-00	XLD Back Cover with rivets	466	579
XLD-W3HL1-BC	16-0-367-00	XLD Back Cover with rivets	609	176
XLD-W3H1-BC	16-0-368-00	XLD Back Cover with rivets	609	310
XLD-W3HL2-BC	16-0-369-00	XLD Back Cover with rivets	609	445
XLD-W3H2-BC	16-0-370-00	XLD Back Cover with rivets	609	579

XLD-line, exploded in separate parts.



PH=Profile Horizontal

XLD-PH-L4	16-0-150-00
XLD-PH-L3	16-0-151-00
XLD-PH-L2	16-0-152-00
XLD-PH-L1	16-0-153-00

PVC=Profile Vertical Corner

XLD-PVC-HL1	16-0-154-00
XLD-PVC-H1	16-0-155-00
XLD-PVC-HL2	16-0-156-00
XLD-PVC-H2	16-0-157-00

PV=Profile Vertical

XLD-PV-HL1	16-0-158-00
XLD-PV-H1	16-0-159-00
XLD-PV-HL2	16-0-160-00
XLD-PV-H2	16-0-161-00

PC=Profile Crossover

XLD-PC-W1	16-0-165-00
XLD-PC-W2	16-0-166-00
XLD-PC-W3	16-0-167-00

PB=Profile Backside

XLD-PB-W1	16-0-162-00
XLD-PB-W2	16-0-163-00
XLD-PB-W3	16-0-164-00

FF=Front Frame

XLD-FF-W1-HL1	16-0-169-00
XLD-FF-W1-H1	16-0-170-00
XLD-FF-W1-HL2	16-0-171-00
XLD-FF-W1-H2	16-0-172-00
XLD-FF-W2-HL1	16-0-173-00
XLD-FF-W2-H1	16-0-174-00
XLD-FF-W2-HL2	16-0-175-00
XLD-FF-W2-H2	16-0-176-00
XLD-FF-W3-HL1	16-0-177-00
XLD-FF-W3-H1	16-0-178-00
XLD-FF-W3-HL2	16-0-179-00
XLD-FF-W3-H2	16-0-180-00

LL=Lock Lip

XLD-LL	16-0-168-00
--------	-------------

D=Drawer assembly

XLD-D-L4-W1-HL1 16-0-204-00
 XLD-D-L3-W1-HL1 16-0-203-00
 XLD-D-L2-W1-HL1 16-0-202-00
 XLD-D-L1-W1-HL1 16-0-201-00

XLD-D-L4-W2-HL1 16-0-208-00
 XLD-D-L3-W2-HL1 16-0-207-00
 XLD-D-L2-W1-HL1 16-0-206-00
 XLD-D-L1-W2-HL1 16-0-205-00

XLD-D-L4-W3-HL1 16-0-212-00
 XLD-D-L3-W3-HL1 16-0-211-00
 XLD-D-L2-W3-HL1 16-0-210-00
 XLD-D-L1-W3-HL1 16-0-209-00

XLD-D-L4-W1-H1 16-0-304-00
 XLD-D-L3-W1-H1 16-0-303-00
 XLD-D-L2-W1-H1 16-0-302-00
 XLD-D-L1-W1-H1 16-0-301-00

XLD-D-L4-W2-H1 16-0-308-00
 XLD-D-L3-W2-H1 16-0-307-00
 XLD-D-L2-W2-H1 16-0-306-00
 XLD-D-L1-W2-H1 16-0-305-00

XLD-D-L4-W3-H1 16-0-312-00
 XLD-D-L3-W3-H1 16-0-311-00
 XLD-D-L2-W3-H1 16-0-310-00
 XLD-D-L1-W3-H1 16-0-309-00

Slide=Drawer Slide set

			L	W	H
XLD-Slide-L1	16-0-371-00	XLD Slide length 776	740	19	57
XLD-Slide-L2	16-0-372-00	XLD Slide length 1026	990	19	57
XLD-Slide-L3	16-0-373-00	XLD Slide length 1266	1230	19	57
XLD-Slide-L4	16-0-374-00	XLD Slide length 1526	1490	19	57